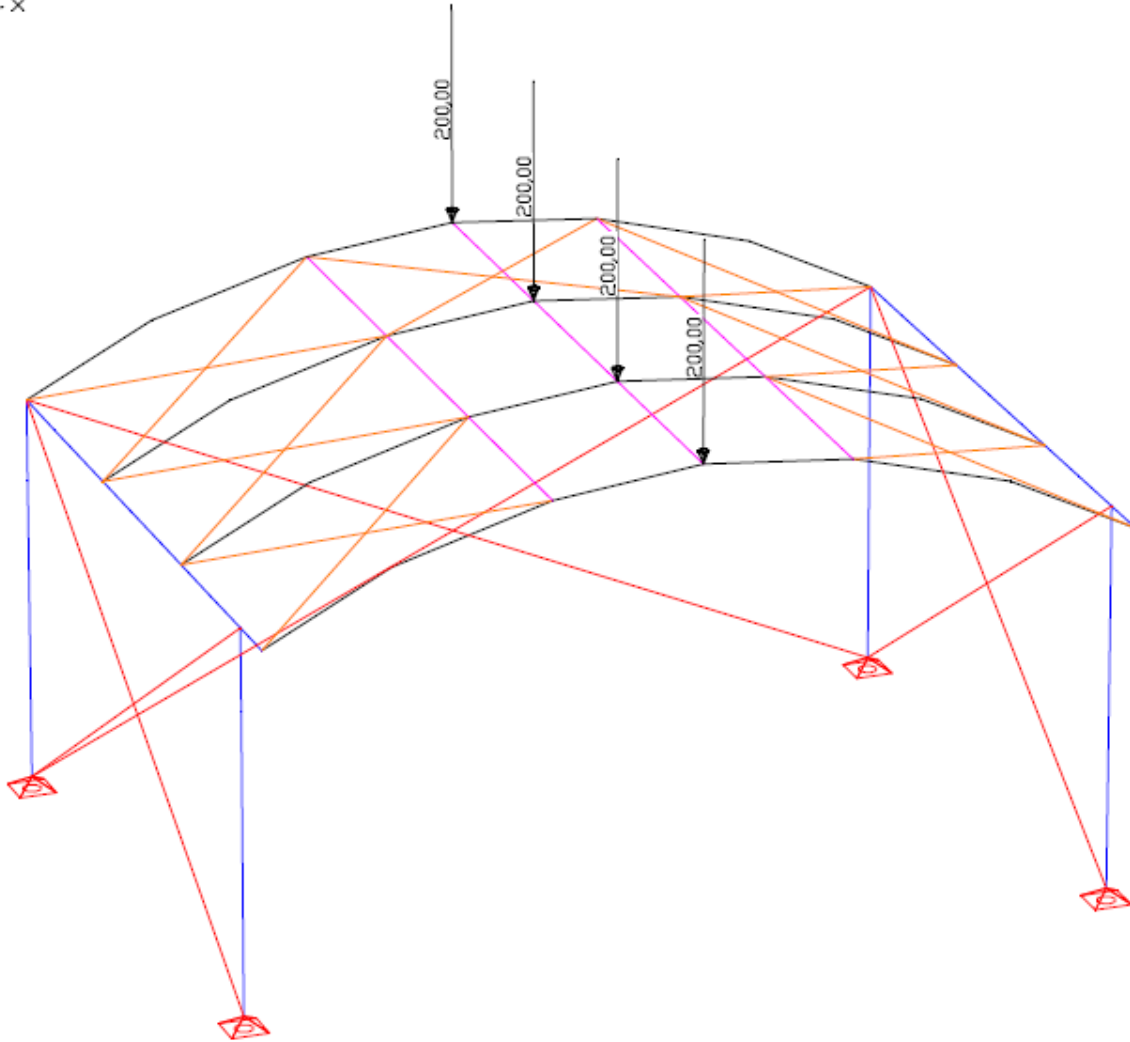


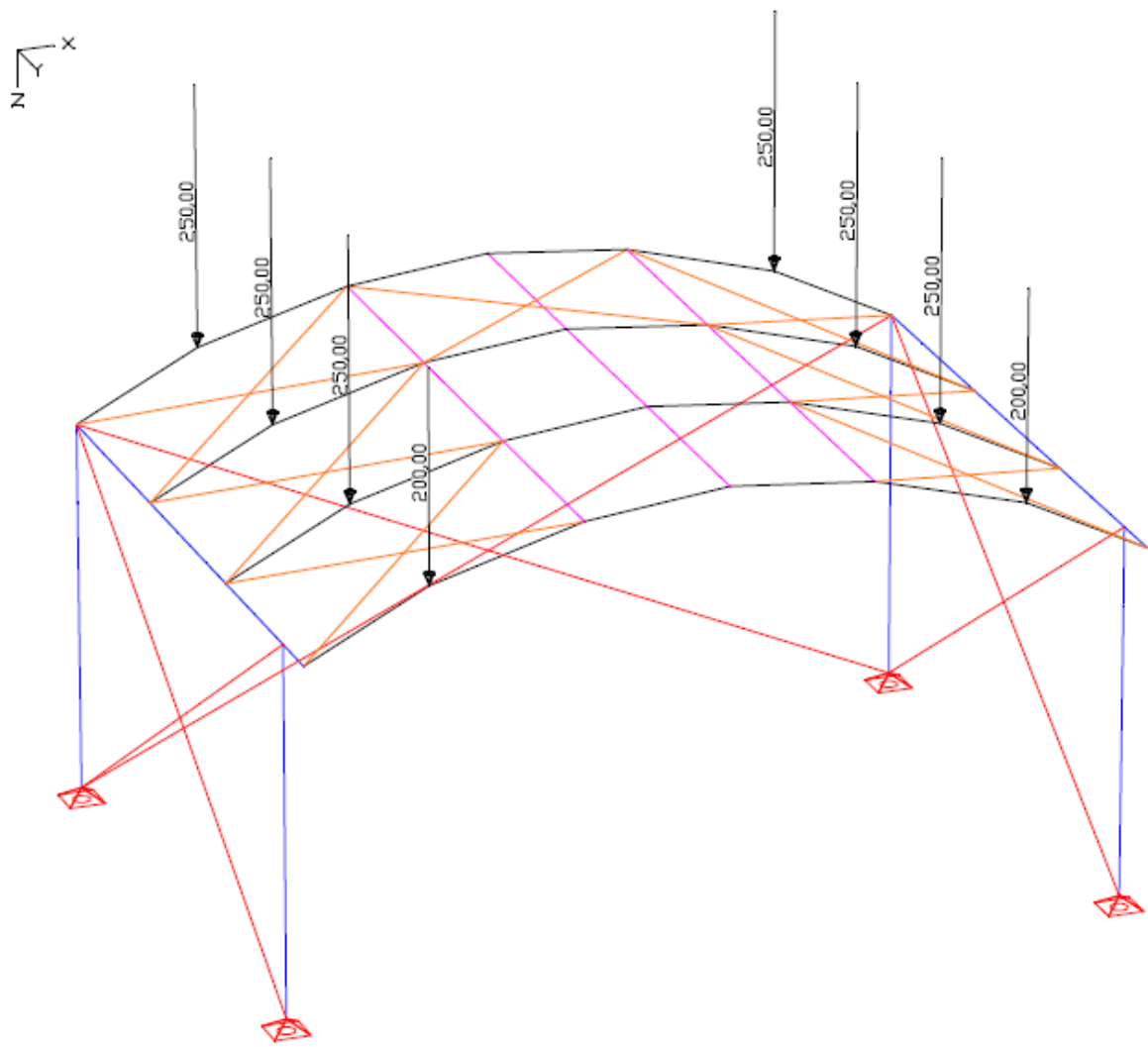
**Center point load / Einzellasten mittig
 [kg]**



LC 3: Load, point load setup1

	front bow/ Bogen Vorne	rear bow/ Bogen Hinten	middle bows / Bögen Mitte	side truss/ Traverse Seite
Stageroof 10x8 Bühne 10x8	200 kg	200 kg	200 kg	

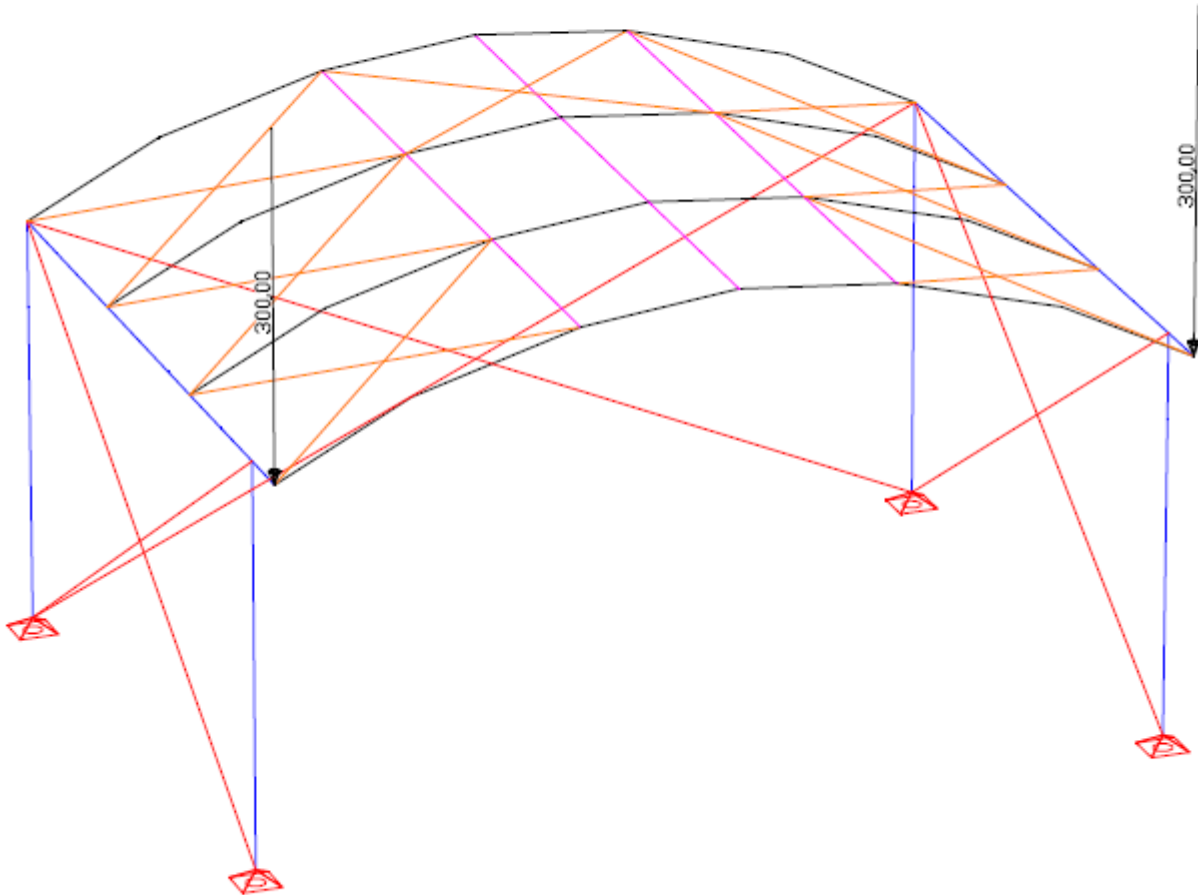
point load setup2 / Einzellasten Anordnung 2
[kg]



LC 4: Load, point load setup2

	front bow/ Bogen Vorne	rear bow/ Bogen Hinten	middle bows / Bögen Mitte	Distance from Tower
Stageroof 10x8 Bühne 10x8	200 kg	250 kg	250 kg	1,3m

**additional PA-load / zusätzliche PA-Last
[kg]**



LG 5: Load, PA-load

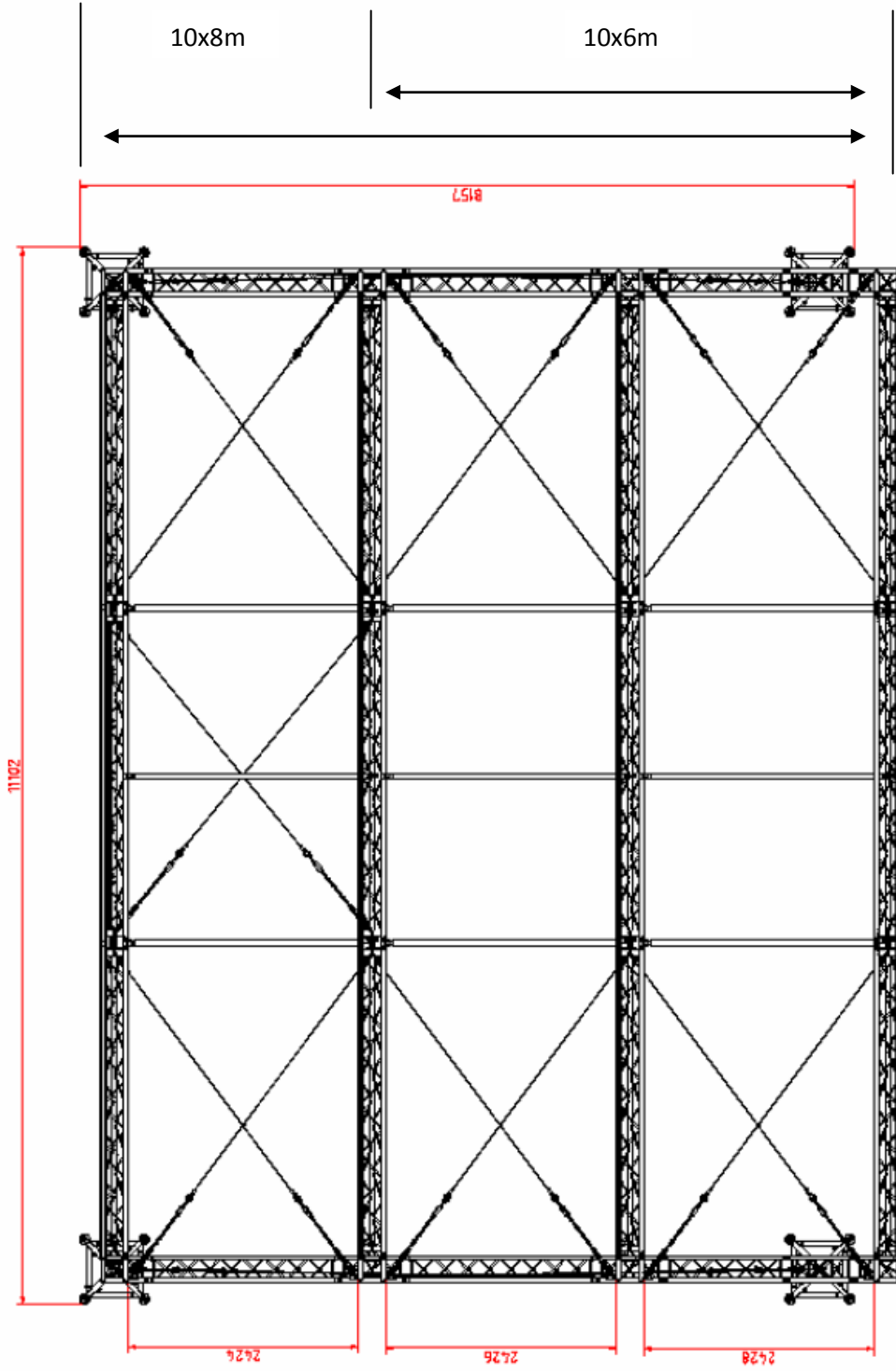
ARC 10X8m

Additionele PA-load 300kg links en rechts vooraan

ARC 10X6m

Additionele PA-load 200kg links en rechts vooraan





TEKENAAR: E.ELLENS	SCHAAL:
DATE: 01-08-2008	MAATENHEID: M
GEWELDKOD:	KLANT:
ART.NR.:	PROJ.: ARC RD
TEK.NR.:	GECONT. DOOR:
BENAMING	
TOP VIEW	



PROVITE PRODUCTS
 INNOVATION • INTEGRATION • INSPIRATION

Deze tekening is vervaardigd met PROTEC 3D CAD. Het is de verantwoordelijkheid van de gebruiker van deze tekening te controleren of deze overeenkomstig is met de werkelijkheid.